

pages:

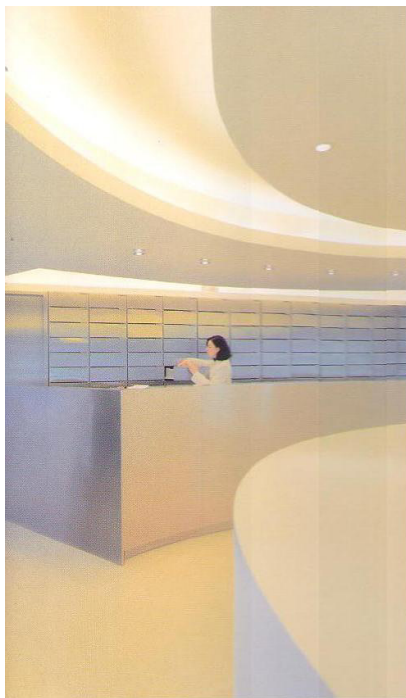
935

issue:

Verlagshaus Braun

date:

2011



01



02



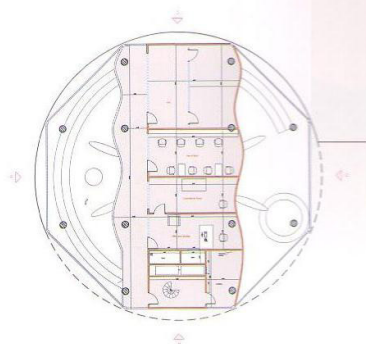
03



04



05



06

Placebo Pharmacy

The design process for this large pharmacy forced the architects to shift their viewpoint and come up with a virtual building – a placebo pharmacy. The octagonal shape of the existing structure was reformed into a cylinder and a spiral around it to converse with the rapid motion of its context. The Braille perforated façade alludes to the pharmaceutical packaging and allows light to find its way into the interior. Inside a ramp up to the upper level extends the dynamism of the exterior spiral into the interior space. Its arranged in a radial pattern to give a natural flow to the space and allow light enter inside throughout the day, with the cashiers desk as the focal point and distributed over two floors, the ground floor as the shop space with the mezzanine as office space.

01 Counter | 02 Exterior view | 03 Exterior at night | 04 Skin detail | 05 Ramp | 06 First floor plan