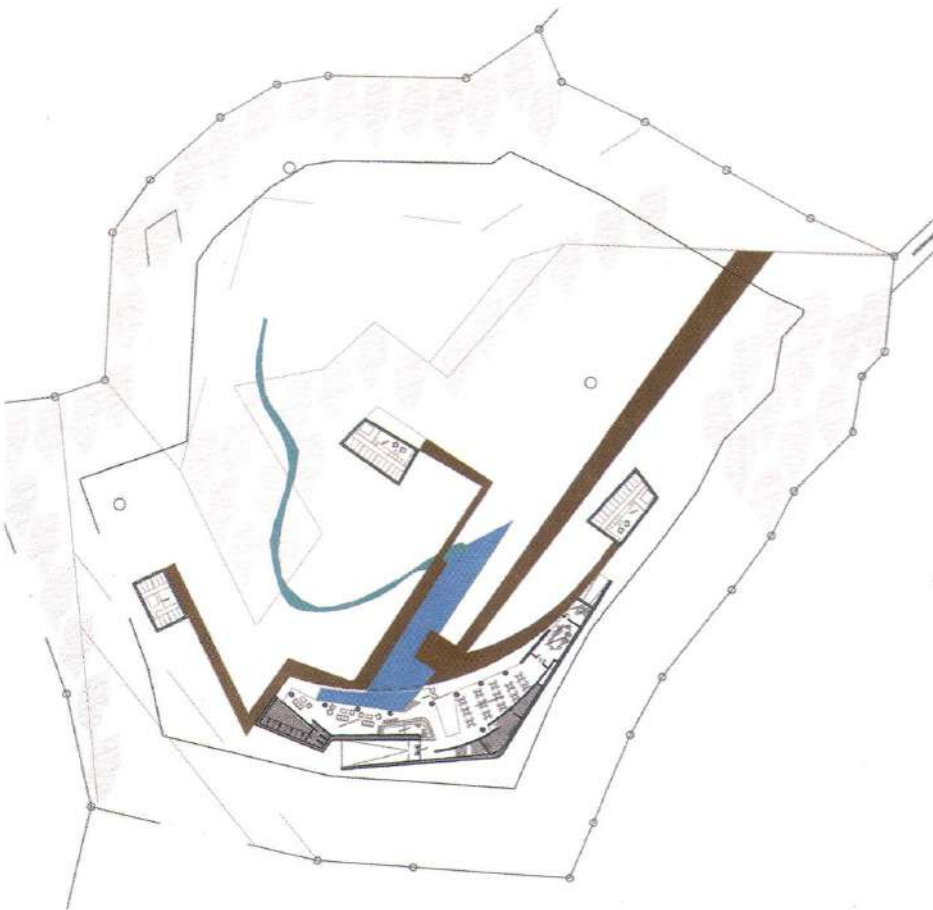


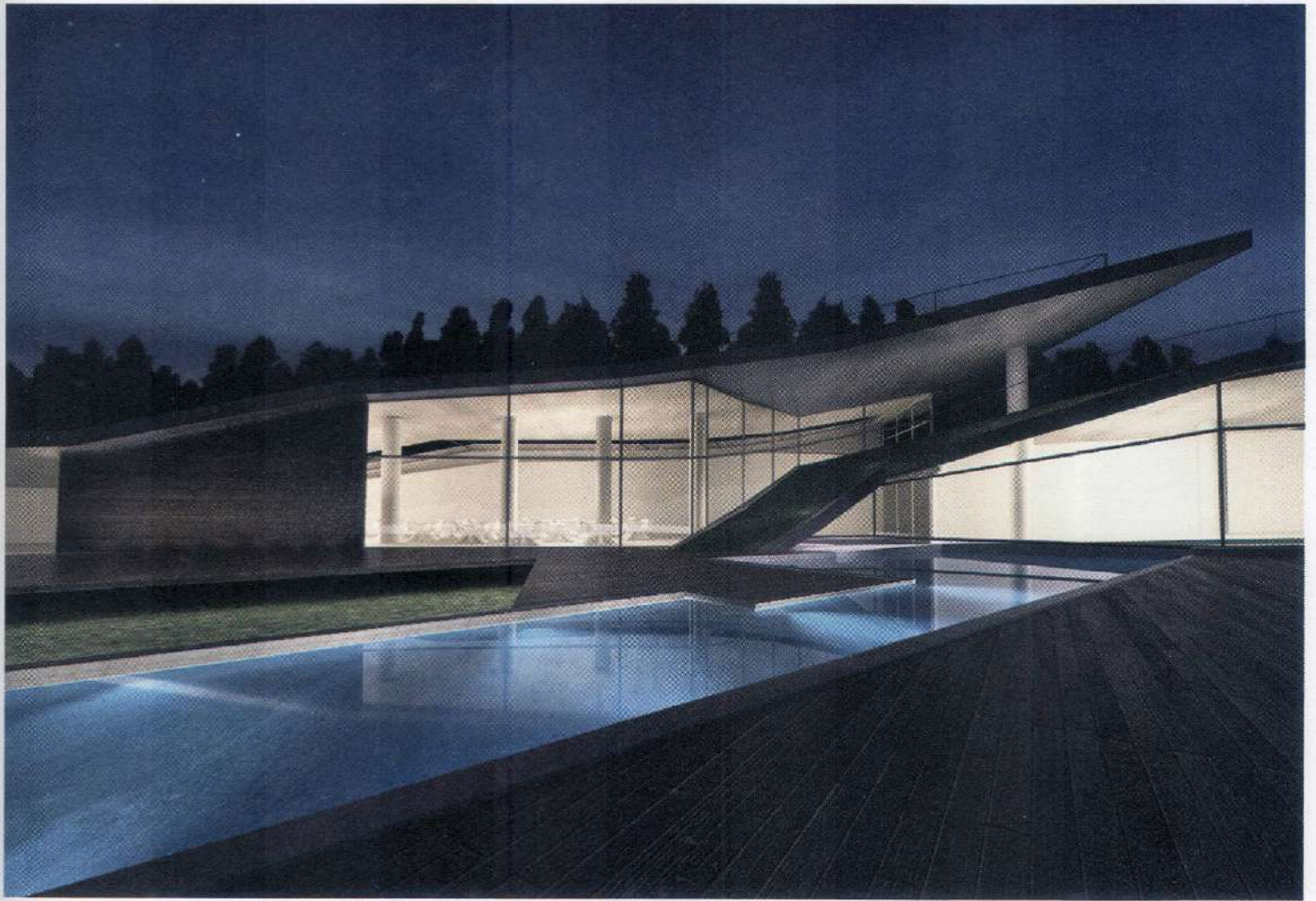
Emerging Landscapes

Karpenisi, Greece / To be determined / Renderings: © Klab Architects



The commission called for the construction of a mixed-use complex that could change its functions depending on the season. The original idea led the architects to conceive a volume that was not too removed from the hilly landscape, which accounts for its low-rise design.

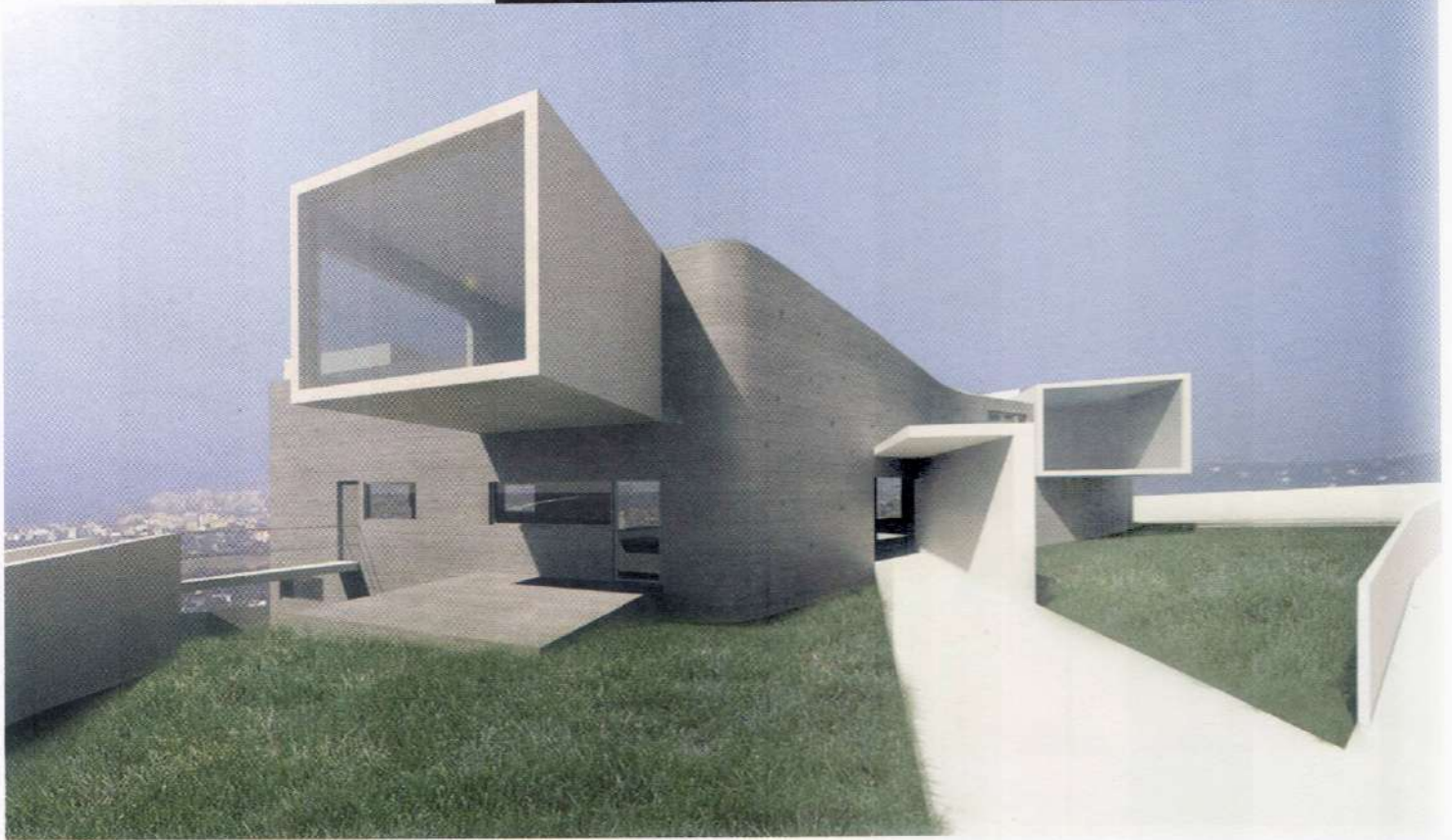




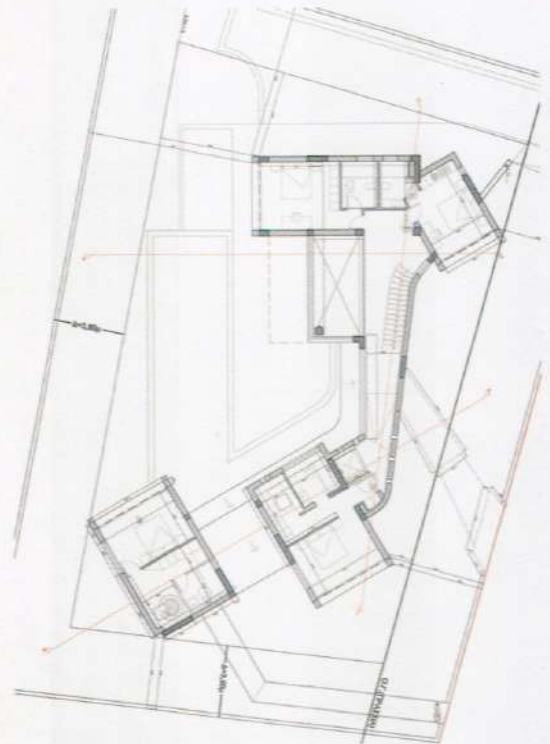
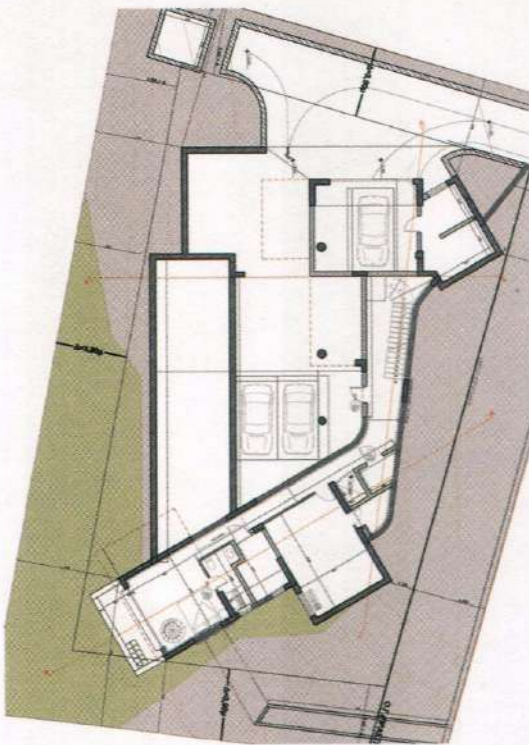
The main building has a floor space of 800 m² (8,611 sq ft), while the other buildings average 80 m² (861 sq ft).

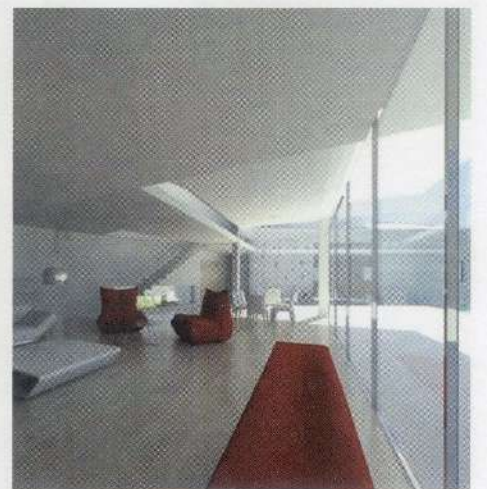
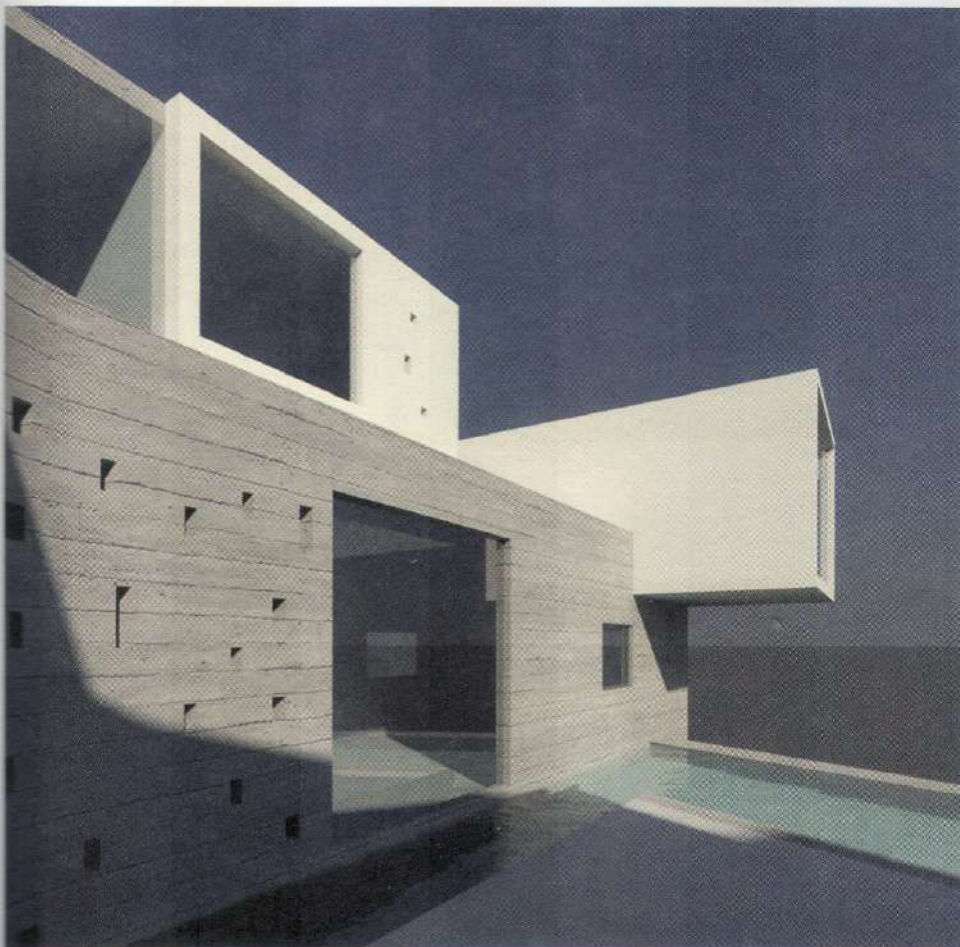
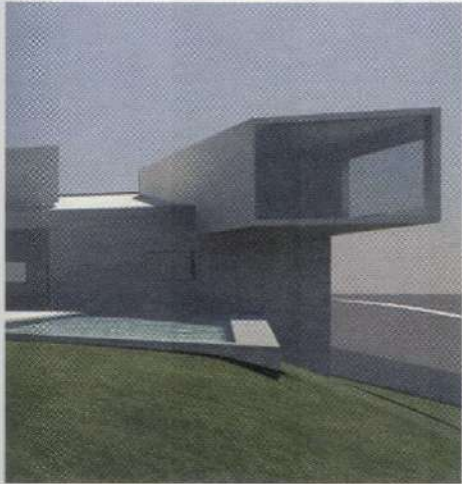
Horizon House

Athens, Greece / 2009 / Renderings: © Klab Architects



The aim of this project was to offer its owners an oasis of peace in the middle of the city, which is achieved by means of a protective wall to isolate the interior space. The layout of the different rooms is influenced by this wall.





The residence is on three levels, the uppermost containing the bedrooms.